

Upgrading and improving access to coastal research vessels across Southern Australia

Mike Steer
February 2025



Government
of South Australia

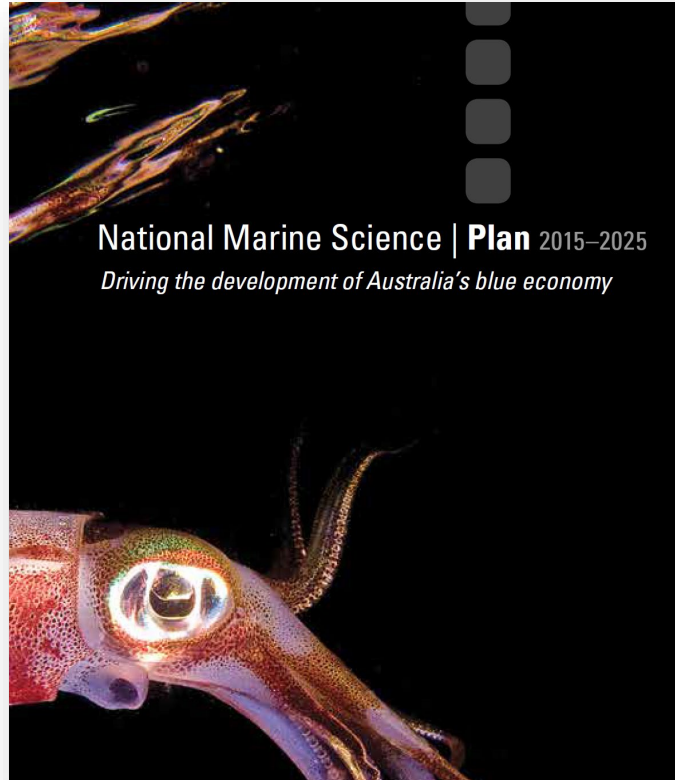
Department of Primary
Industries and Regions

SARDI



SOUTH AUSTRALIAN
RESEARCH AND
DEVELOPMENT
INSTITUTE

Fund National Research Vessels for Full Use



*“To ensure that the nation gets the most from existing vessel capacity, we recommend that operators of coastal research vessels increase the opportunities for collaborative use across the Australian marine science community, particularly for areas identified in this Plan as a high priority.” **Recommendation 8***



Government
of South Australia

Department of Primary
Industries and Regions

SARDI



SOUTH AUSTRALIAN
RESEARCH AND
DEVELOPMENT
INSTITUTE

National Collaborative Research Infrastructure Strategy (NCRIS) funding

Seed funding (NCRIS) – establish the Southern Coastal Research Vessel Fleet

Concept design for a vessel to replace the MRV *Ngerin*

Business case for the replacement vessel

Replace the MRV *Ngerin*



Southern Coastal Research Vessel Fleet



**COASTAL
RESEARCH**
VESSEL FLEET



Government of South Australia
Department of Primary Industries and Regions

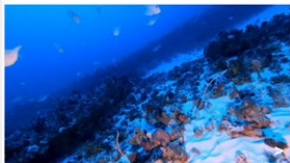


Department of Primary Industries and Regional Development

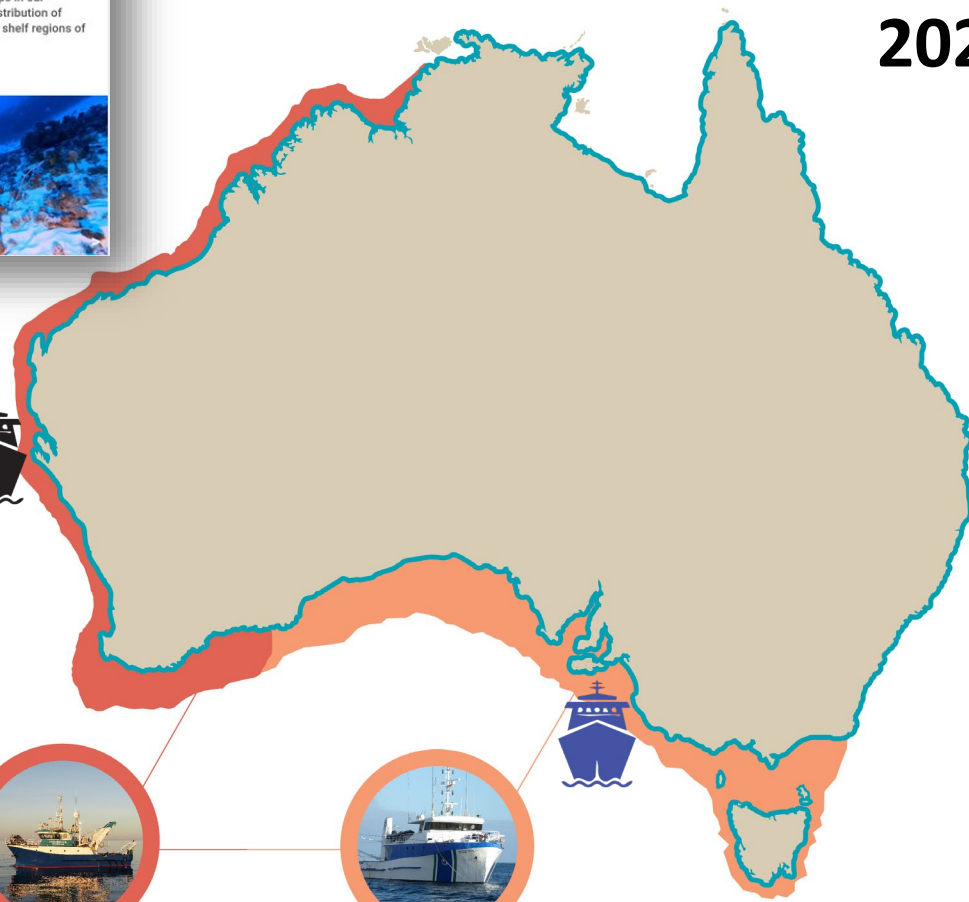


Quantifying seabed habitats, April 2023

Focusing on the Murray Marine Park, this voyage aimed to fill key information gaps in our knowledge of the extent and distribution of seabed habitats for continental shelf regions of temperate Australia.

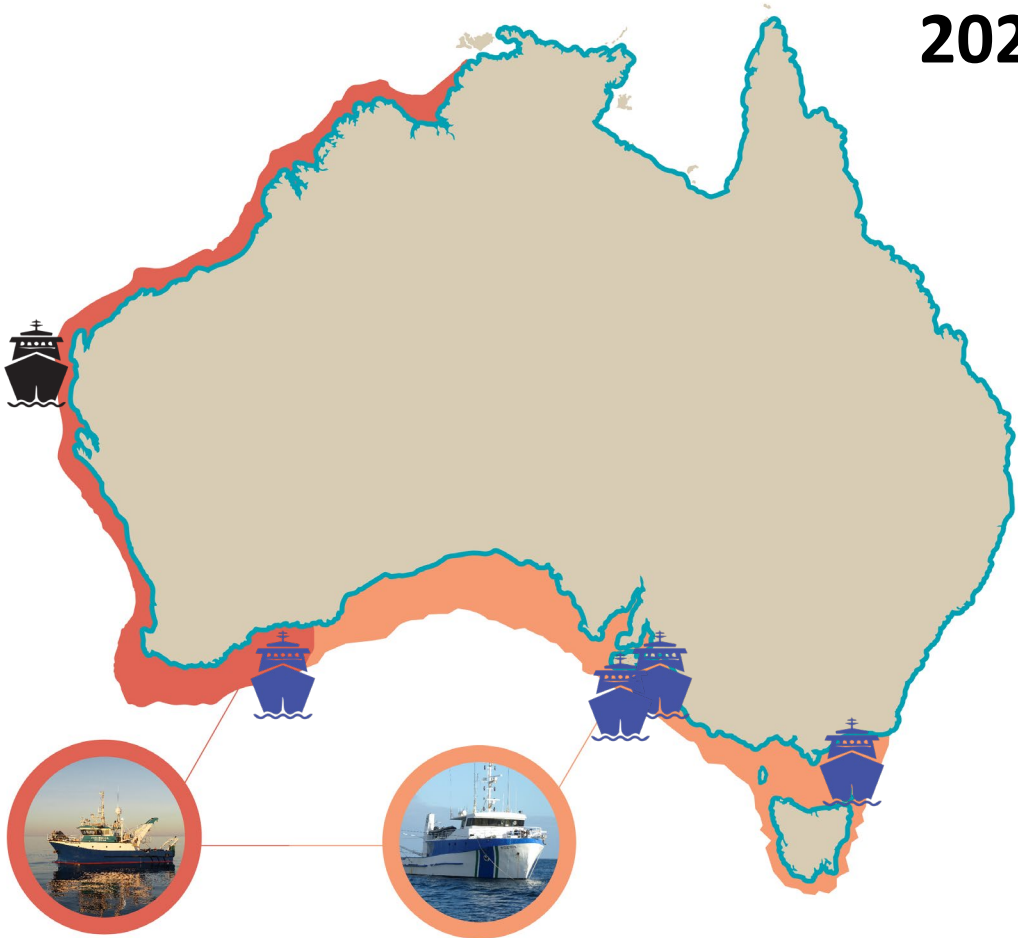


2023





2024



2025





What's next?

- Transit voyages
- Continuous underway data collection
- Schedules in Marine Facilities Planning
- CoastRI
- Metadata from funded voyages available on the AODN
- Capturing value of additional research

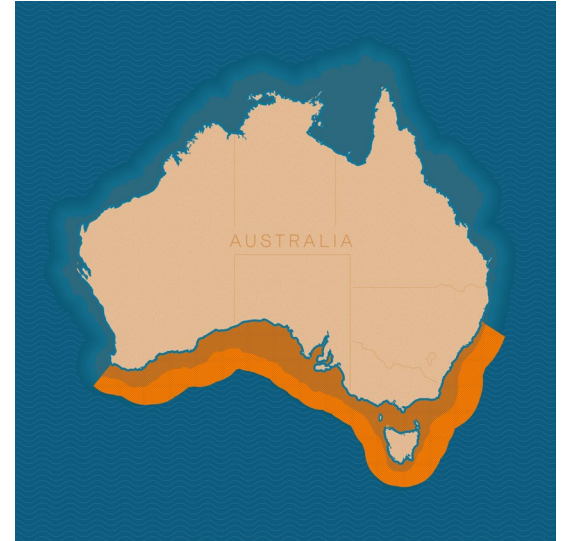
Replacement vessel

- Extensive engagement with internal and external stakeholders
- International expertise
- Identified vessel capabilities
- Developed concept design
- Developed business case



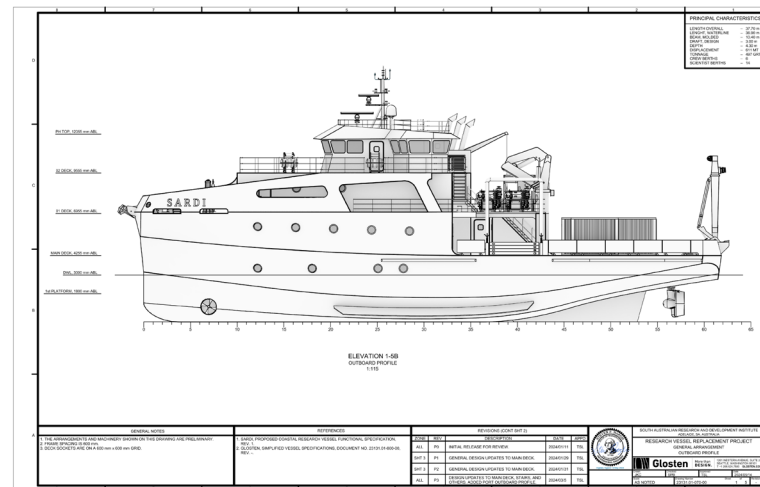
Vessel capabilities required

- Stable vessel with extended geographic range
- Acoustically sound
- Modular capability
- Large aft deck
- Wet and dry laboratories
- Accommodate 6 crew & 10-14 science staff
- Extended endurance
- Efficient vessel / move to lower carbon emissions
- < 45 metres



Replacement vessel

- Length: 37.7m
- Beam: 10.4m
- Draft: 3.0m
- Cruising speed: 10kts
- Max speed: 12 kts
- Endurance: 30 days
- Range: 4000 nm
- Accommodation: 6 crew; 10-14 science staff
- Dynamic positioning
- Diesel-electric





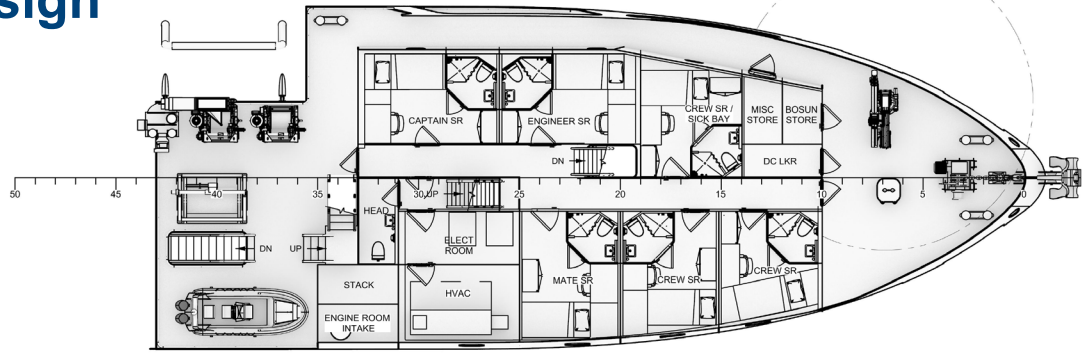
SARDI



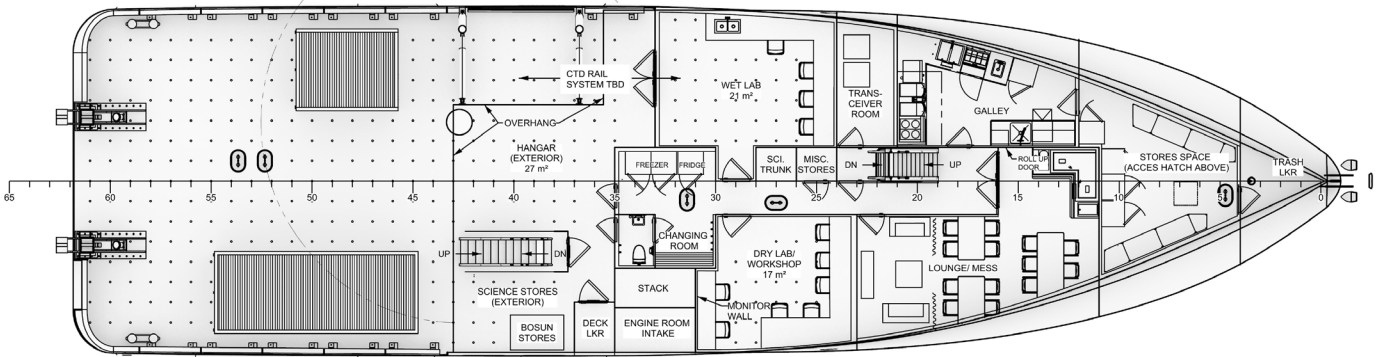
SARDI
UNIVERSITÄT
DEUTSCHES
HERMANN





Concept design



PLAN 4-5C
01 DECK
1:115



PLAN 4-5A
MAIN DECK
1:115

	SOUTH AUSTRALIAN RESEARCH AND DEVELOPMENT INSTITUTE ADELAIDE, SA, AUSTRALIA			
	RESEARCH VESSEL REPLACEMENT PROJECT GENERAL ARRANGEMENT 01 DECK & MAIN DECK			
	More than DESIGN	1200 WESTERN AVENUE, SUITE 200 SEATTLE, WASHINGTON 98108 T+1 206 624 7600 GLOSTHEN.COM		
JWC AS NOTED	SPS 23131.01-070-00	TSL 2024.05.14	SHEET 4	TOTAL 5



Next steps

