

Ocean observations and offshore wind opportunities

IMOS ANNUAL MEETING
26 FEBRUARY 2025

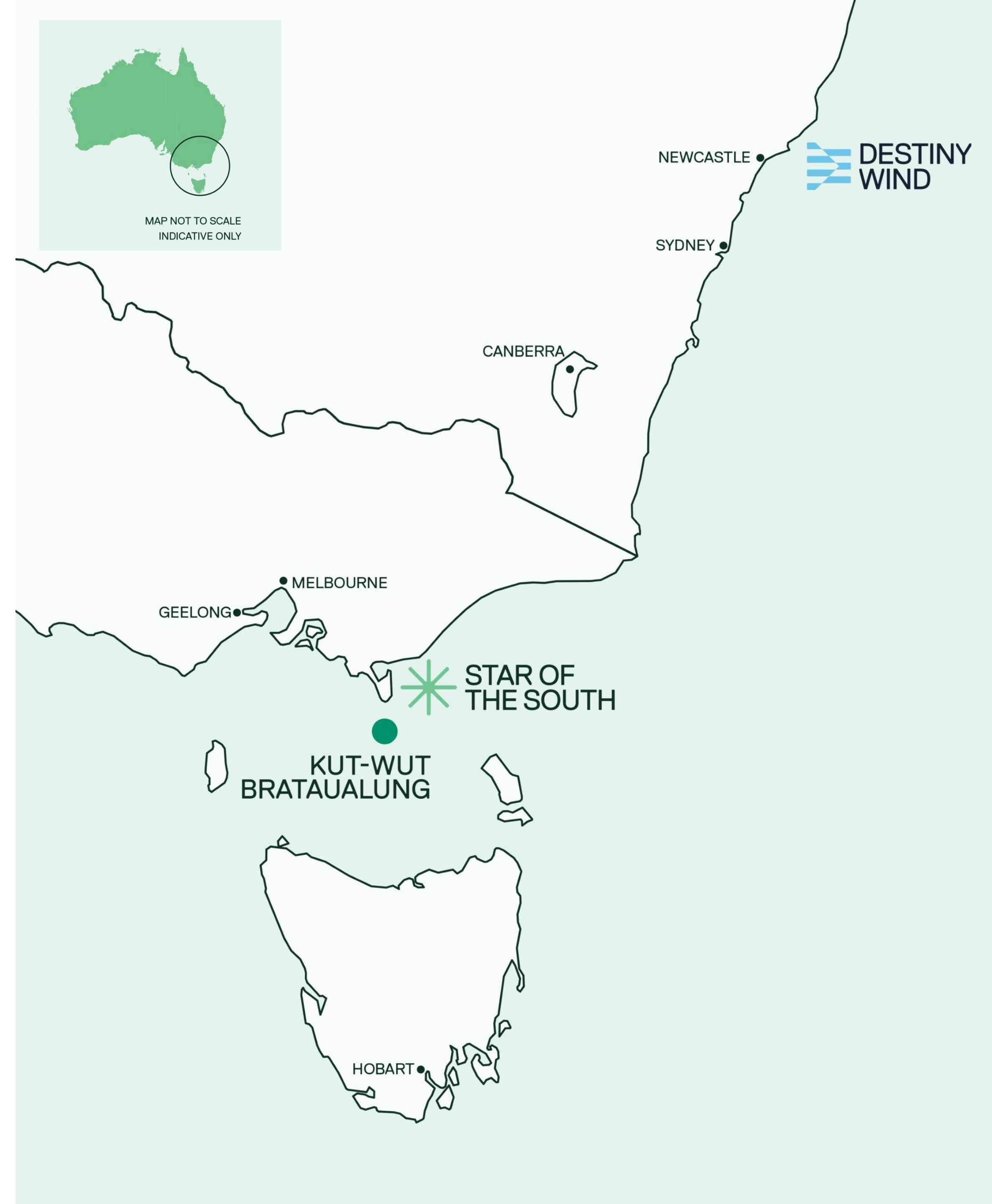


Acknowledgement of country

We acknowledge the traditional owners of the lands on which we meet today, the Kaurna people of the Adelaide plains, and the lands on which our project is being developed, the Gunaikurnai people. We pay our respects to all elders past and present.

About Southerly Ten

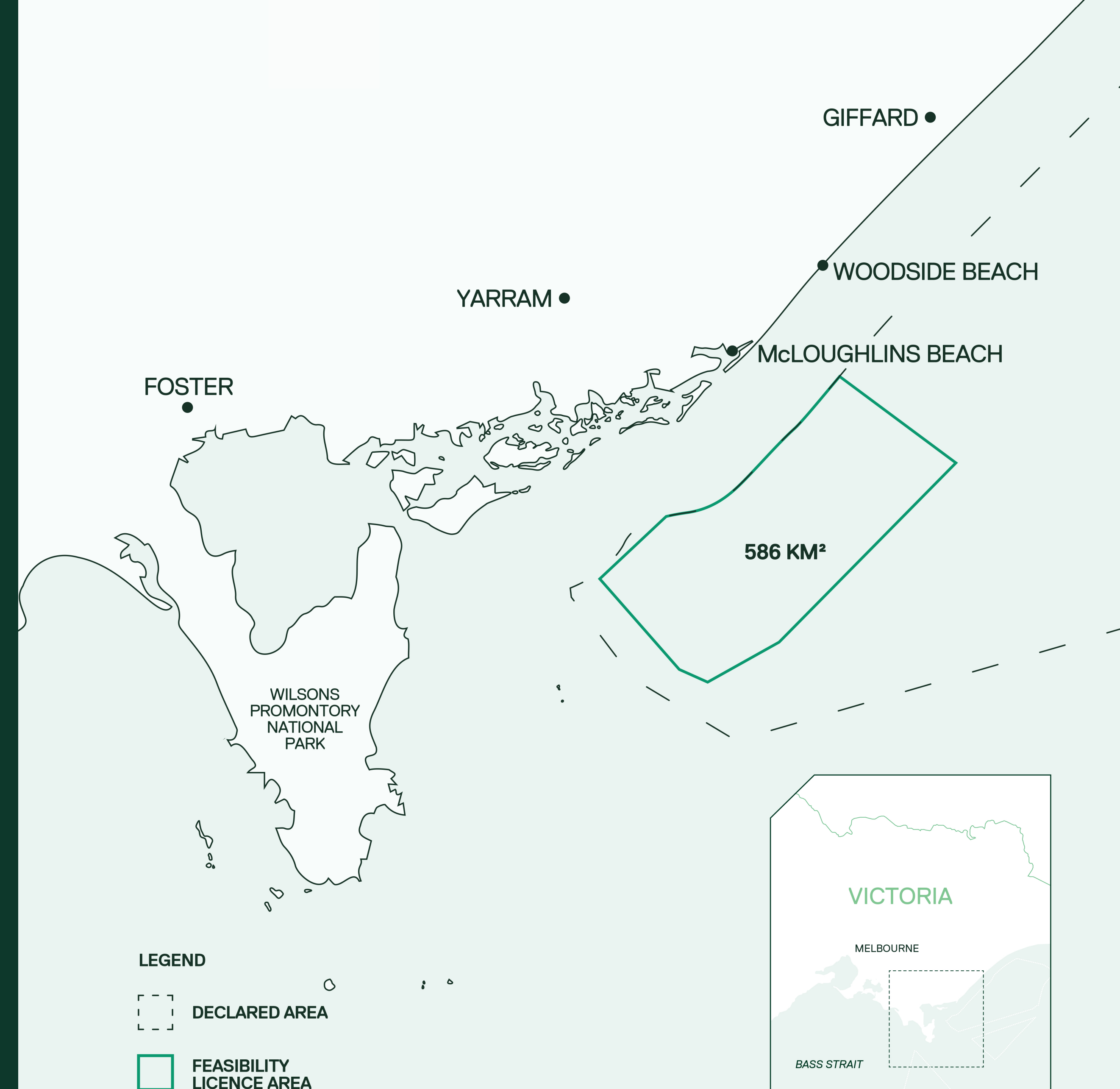
- A specialist offshore wind energy developer for Australia and New Zealand
- Powered by leading global fund manager Copenhagen Infrastructure Partners (CIP)
- Our mission is to advance a local offshore wind industry and leave a legacy of clean energy for future generations
- Two Gippsland projects with feasibility licences, **Star of the South** and **Kut-Wut Brataualung**
- One project awaiting outcomes in the Hunter offshore wind zone, **Destiny Wind**.



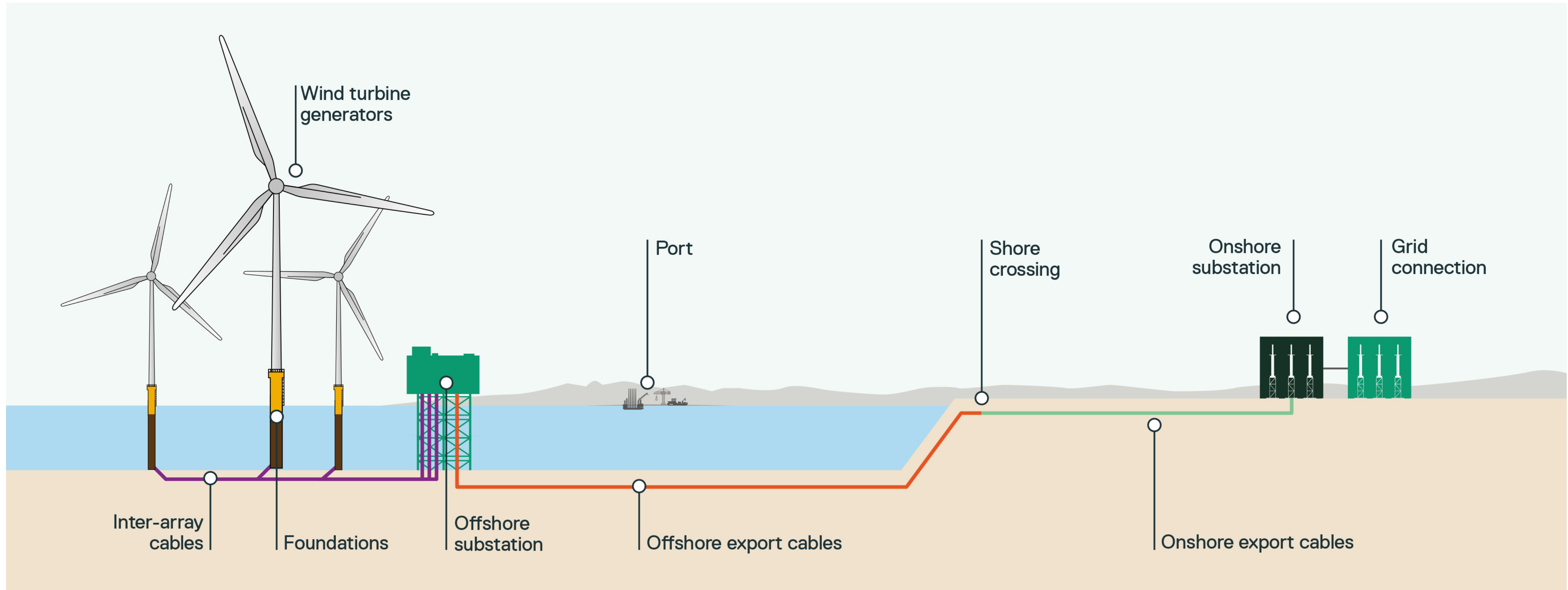
Star of the South

Star of the South is Australia's most advanced offshore wind project.

- Up to 2.2 GW installed capacity
-
- Enough to power 1.2 million homes
-
- 586 square km feasibility licence area
-
- At least 10 km off the coast
-
- Up to 6,000 Australian jobs across the project life and \$8 billion added to the economy.



How offshore wind works



Ports

Ports play an important role in offshore wind projects construction and operation.

Port operators across Australia are planning upgrades to their facilities to meet the needs of this new industry.

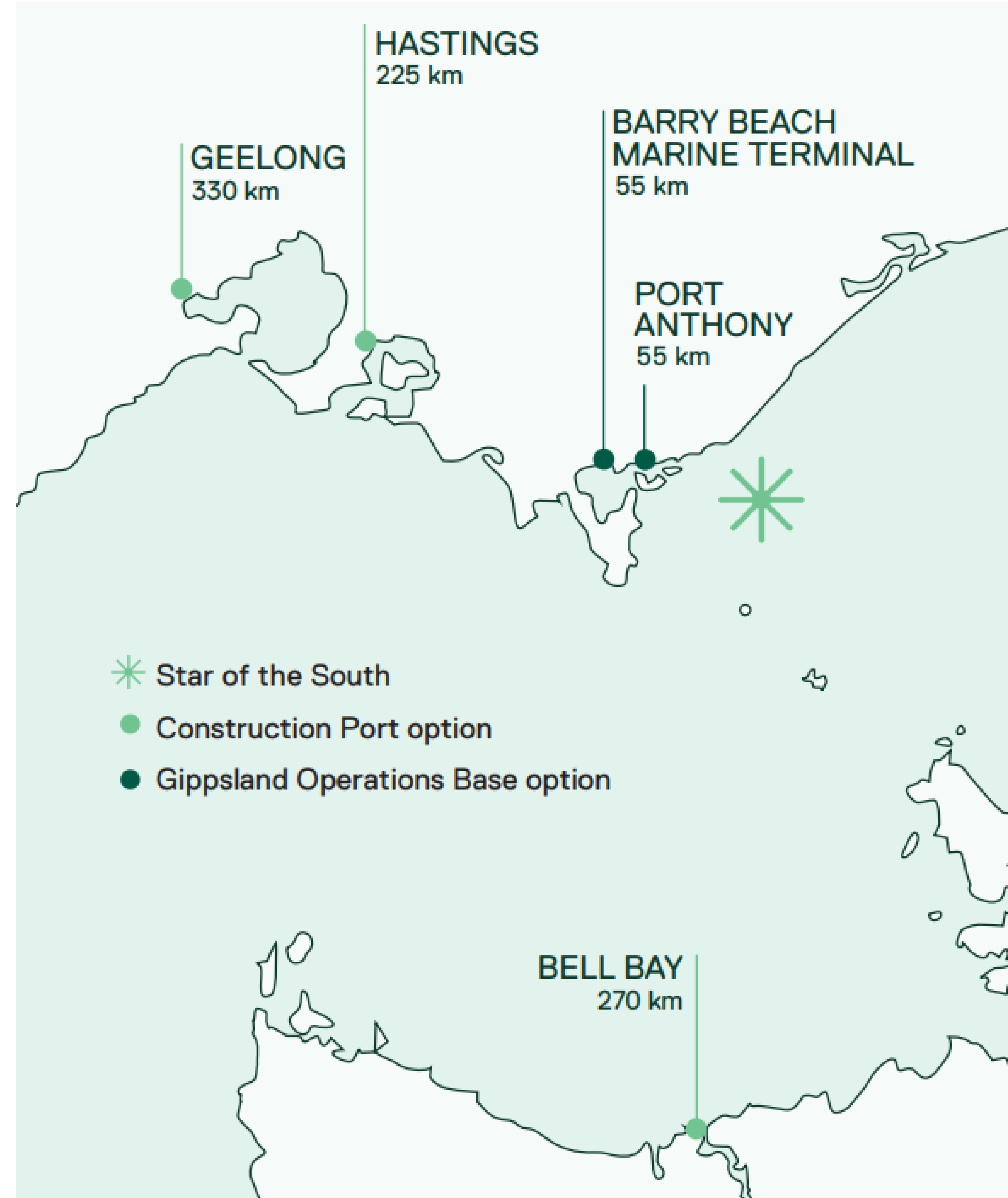
We're looking at a range of ports that may be suitable to support our projects.



Construction port, Germany

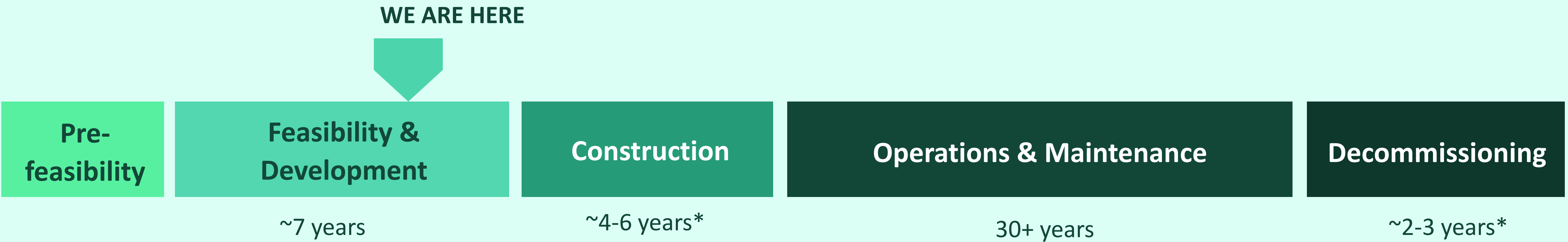


Potential location for the Gippsland Operations base



Where are we now – and what's next?

Star of the South aims to start generating electricity around 2030 to support the Victorian offshore wind target of 2 GW by 2032, working up to 9 GW by 2040.



* Depending on project size

Star of the South progress



Marine Ecology Survey Program

Aims to establish a robust baseline of data to building understanding of:

- The ecological significance of the proposed project area for key species
- Key species diversity, abundance, distribution and seasonality
- Potentially sensitive areas or species.

3 years



13,000+ hours



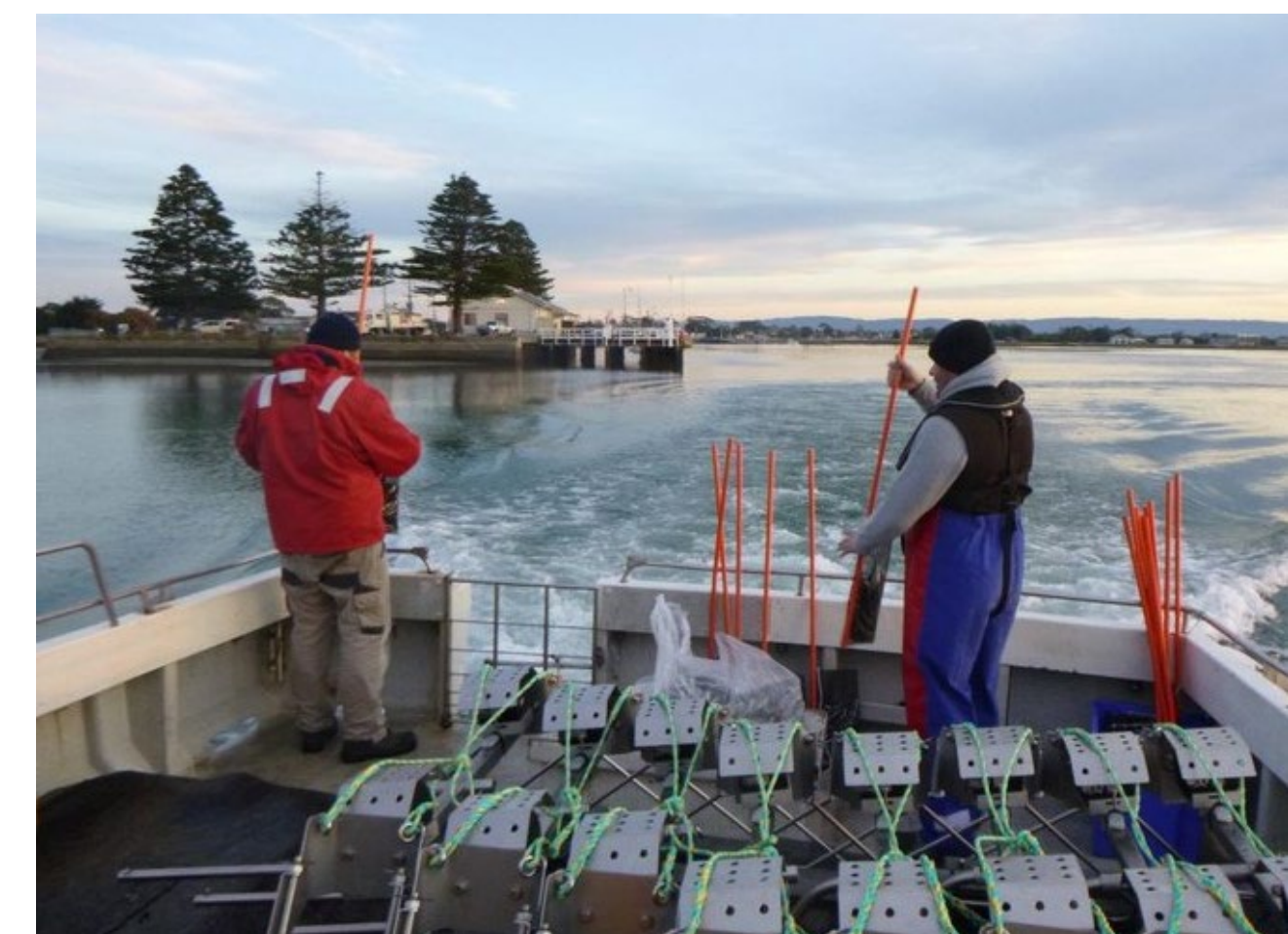
50,000+ observations



University of
St Andrews



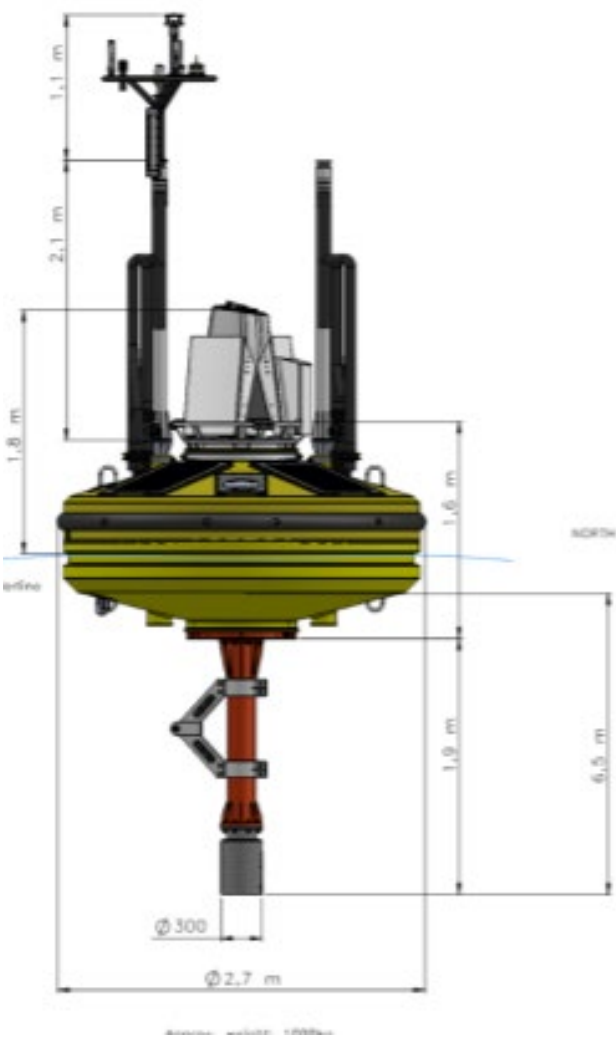
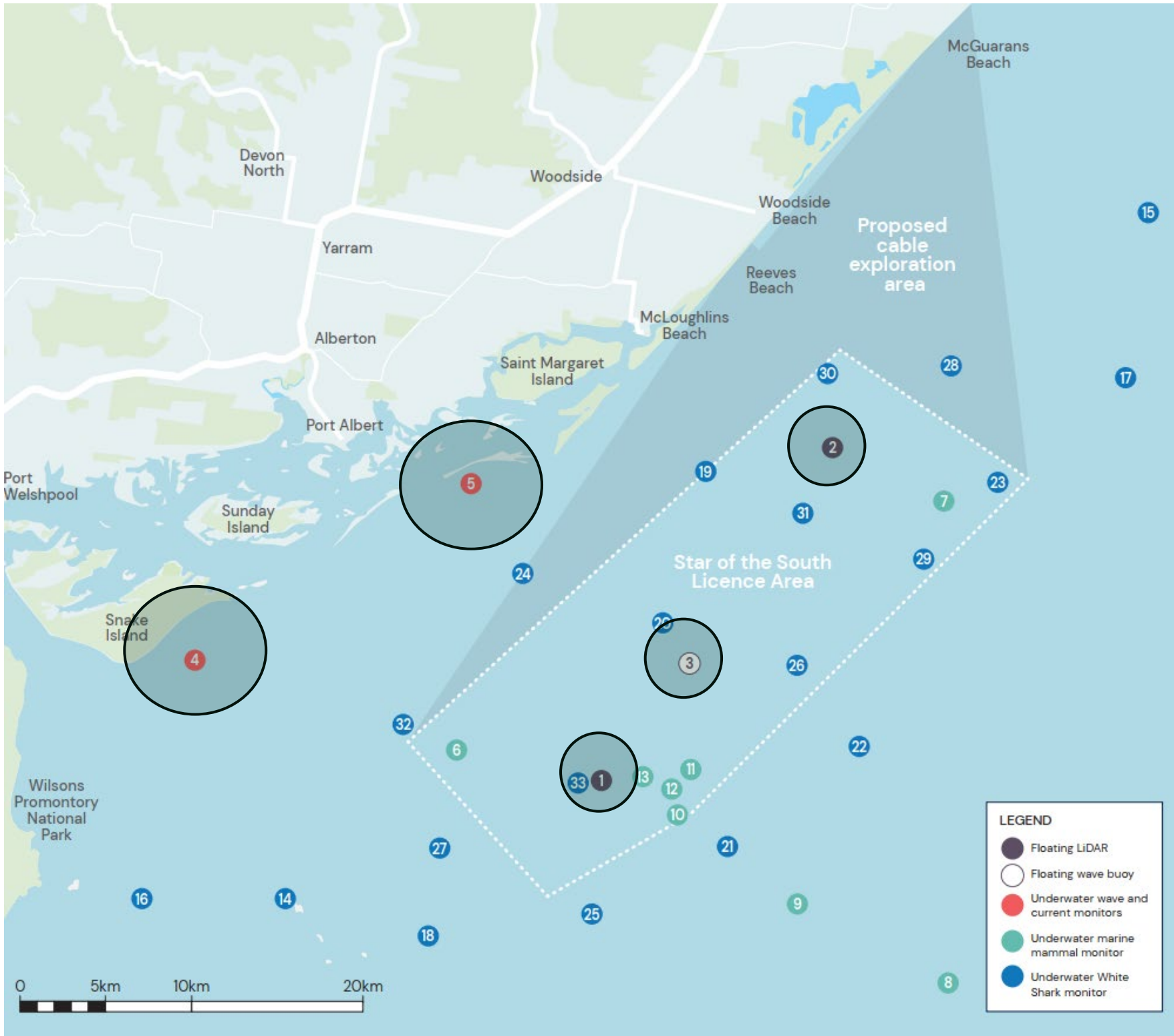
MONASH University



Coastal processes



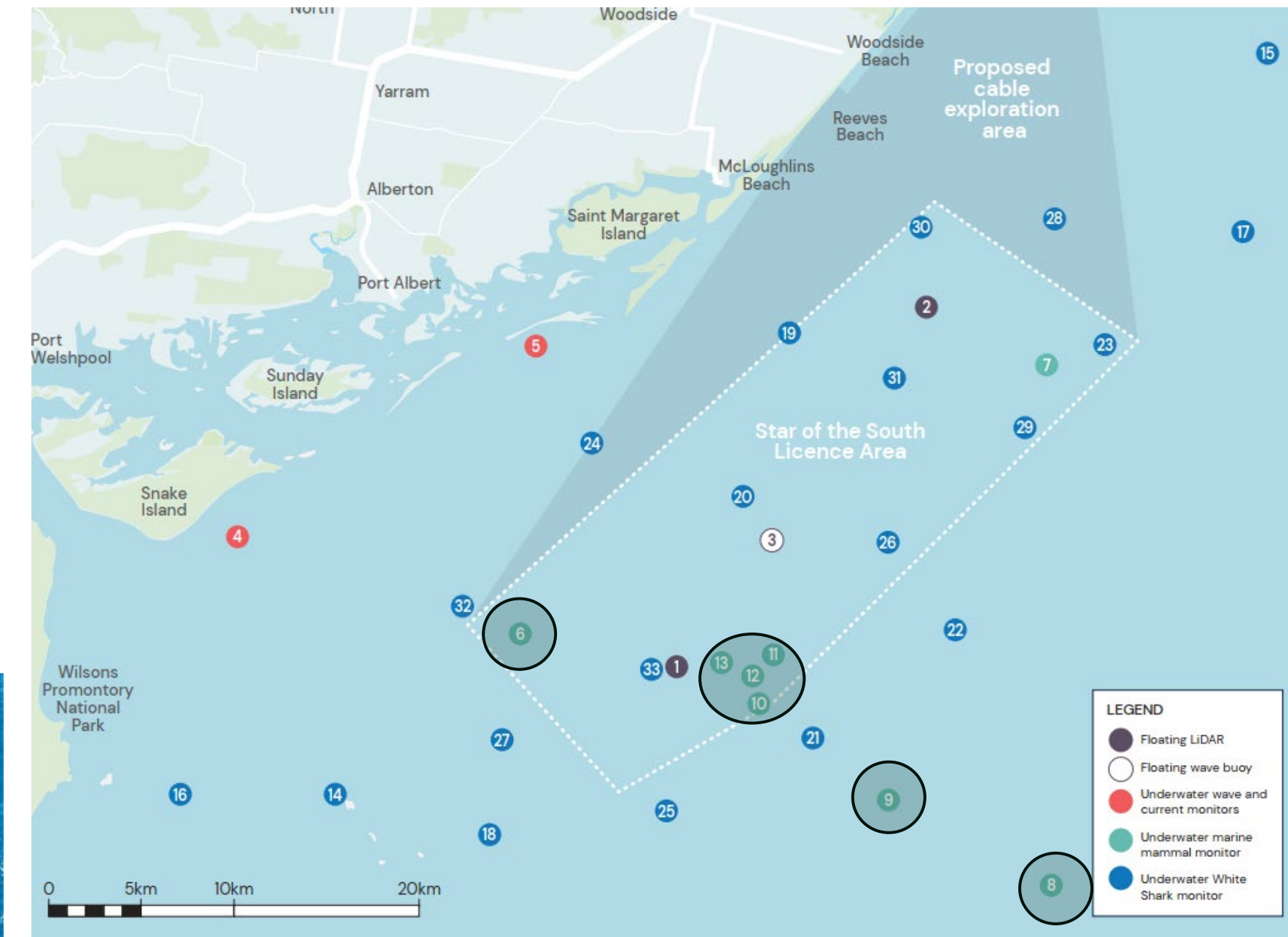
- Determine **local sediment** transport + **coastal processes**
- **Waves and currents** monitored for 12 months:
 - 2 **AWAC** monitors
 - 2 **FLiDARs**
 - 1 **wave buoy**
- **Data to validate** hydrodynamic and climate **models.**



Marine mammals



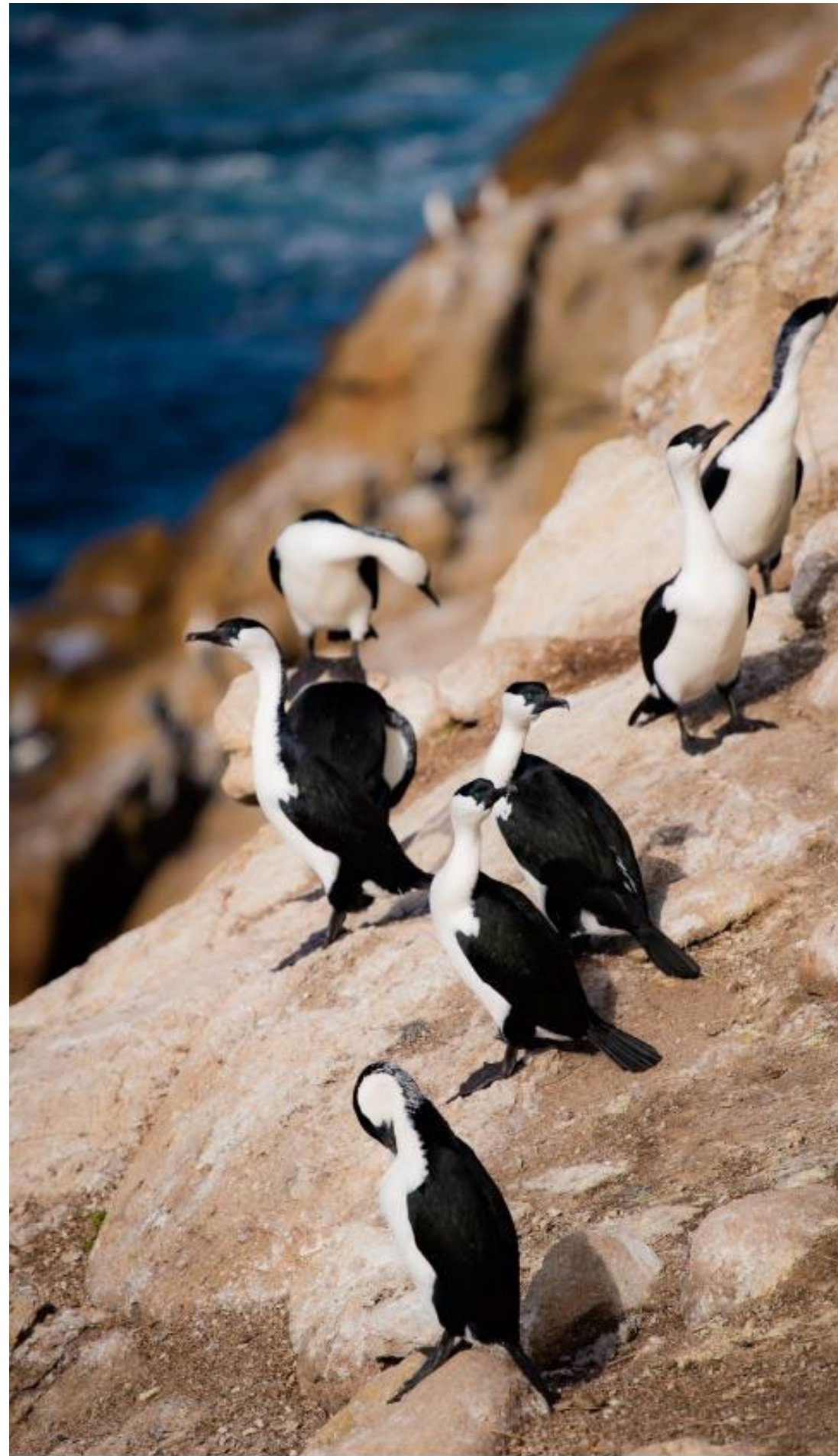
- Determine **marine mammal diversity and abundance**
- **Acoustic monitoring** for one year across 10 hydrophones
- **GPS tagged 44 seals**
- **Aerial surveys – bi-monthly**



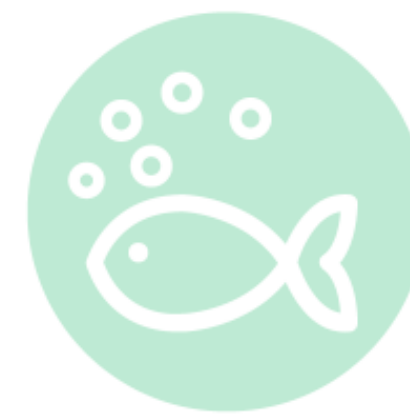
Birds



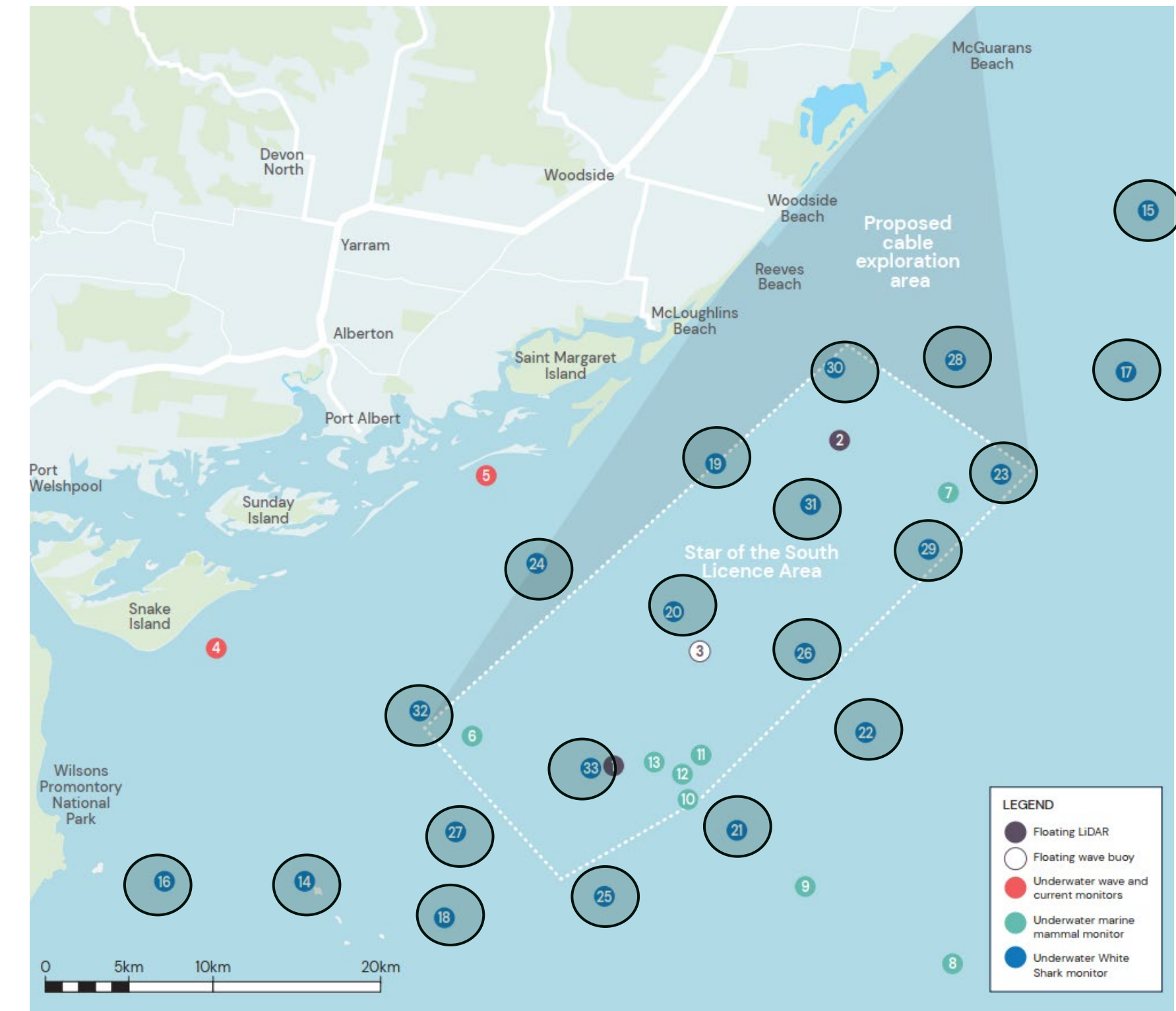
- Determine **bird diversity, abundance** and **flight heights**
- **Digital aerial survey:**
 - **176 flight hours**
 - **LiDAR for bird heights**
- **GPS tagged 321 birds**
- **Boat and shore-based surveys**



Fish and acoustic monitoring



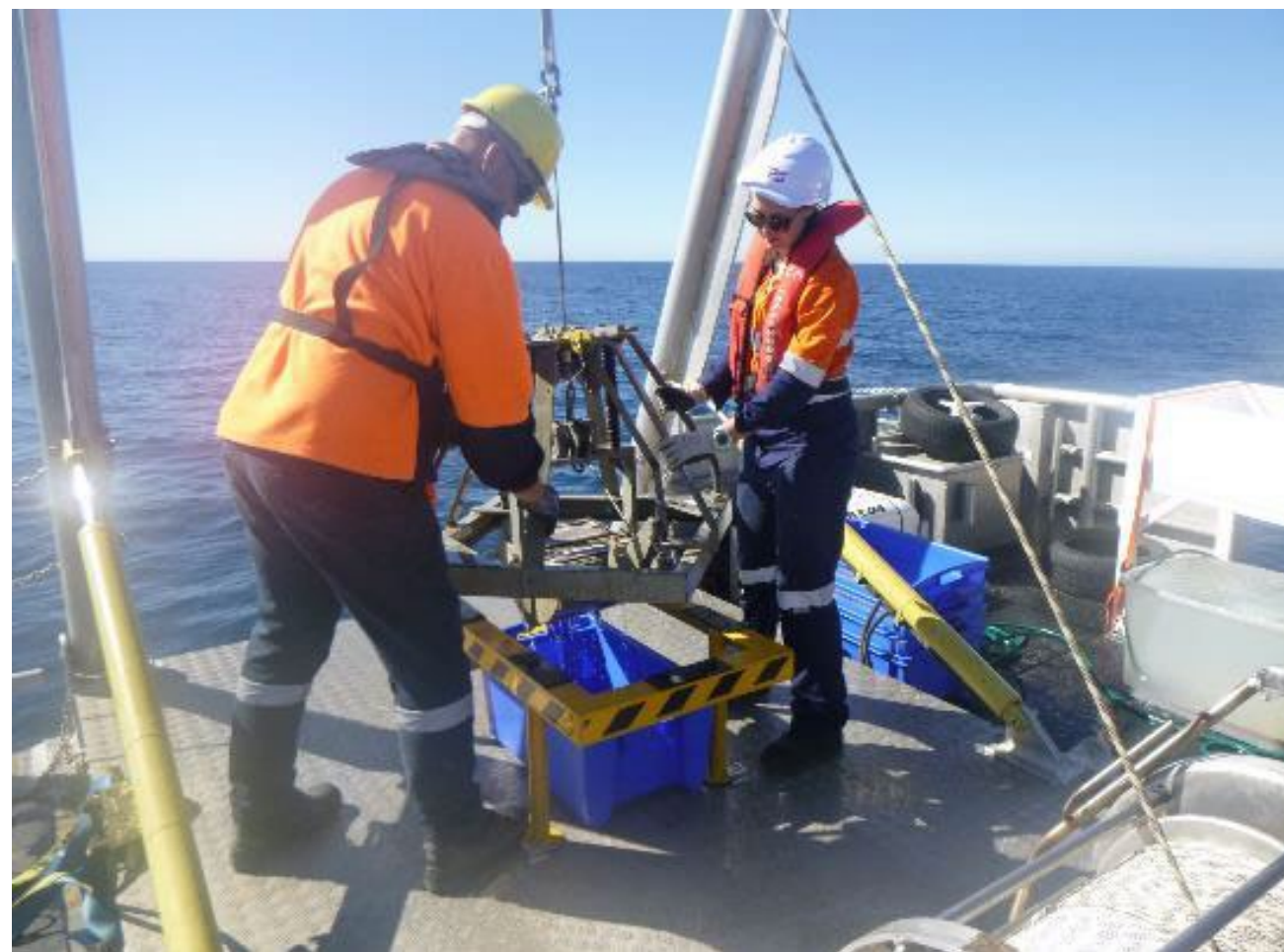
- Determine **local fish** and invertebrate **diversity** and **abundance**:
 - ~130 **BRUVs** per season
 - Danish **seine** survey
 - **Gillnet** surveys
- White Shark **acoustic** monitoring
- **20 receivers** deployed



Benthic ecology



- Determine **benthic habitat**:
 - 14 days at sea
 - 80 drop cameras
 - 200 sediment grabs
- 10 km² of seabed covered



What's next?

- Completing our Environmental Impact Assessment
- Exhibiting these reports for public review and submission
- Participating in the Victorian Government offshore wind auction
- Continue working with Traditional Owners, communities, fishers, industry and government.



Future opportunities for collaboration

How do you think we could collaborate?

- Operations over 30 years
- Leverage offshore infrastructure
- Daily vessel activities
- Continuous environmental monitoring required

Where do your research priorities align with our activities?

We're looking at examples from other countries as we plan for Star of the South.



Working with the ocean community

- Ocean Decade Australia
- Ocean Impact Organisation
- Nature Positive Summit Ocean Dialogue
- Blue Economy CRC
- Data sharing opportunities





A PROJECT BY



info@southerlyten.com.au
southerlyten.com.au

LinkedIn: Southernly Ten

Office: (03) 9108 4000
Community: 1800 340 340