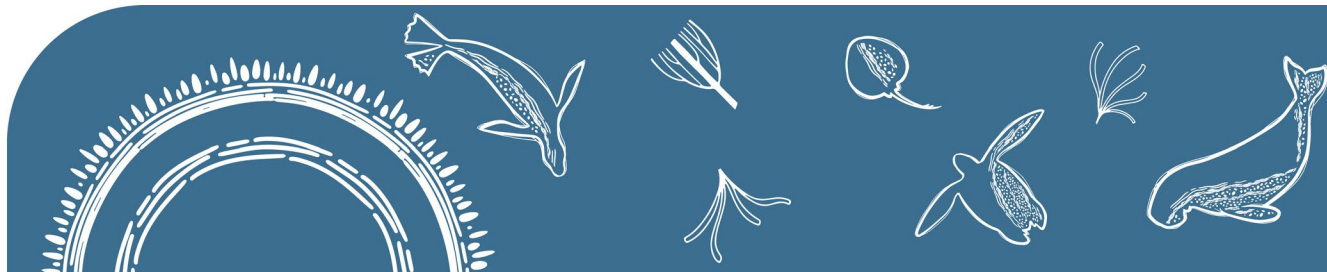


IMOS Indigenous Partnerships

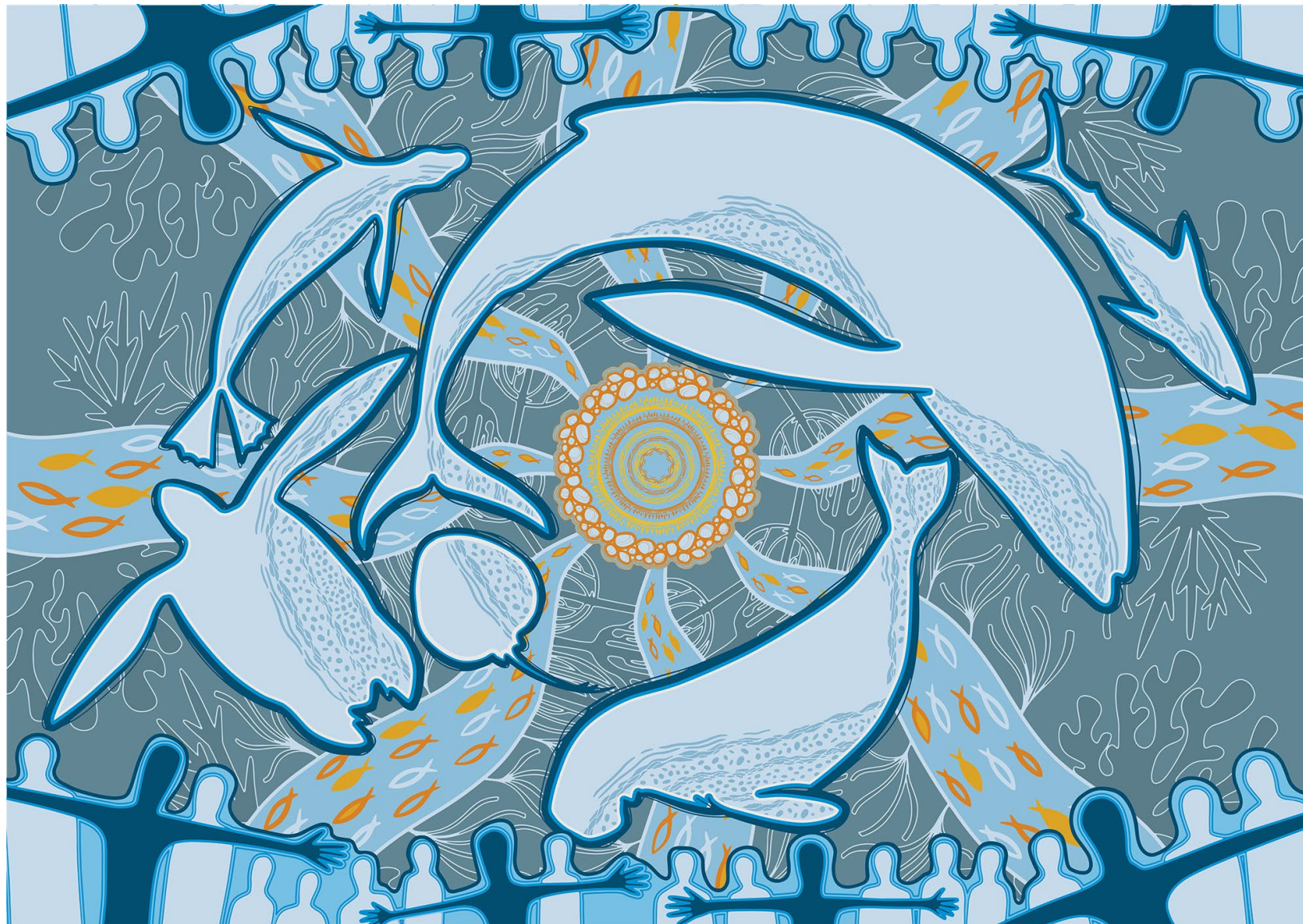


IMOS acknowledge the Traditional Custodians and Elders of the land and sea on which we work and observe as Australia's first marine scientists and carers of Sea Country. We pay our respects to Aboriginal and Torres Strait Islander peoples past and present.

Around the Campfire

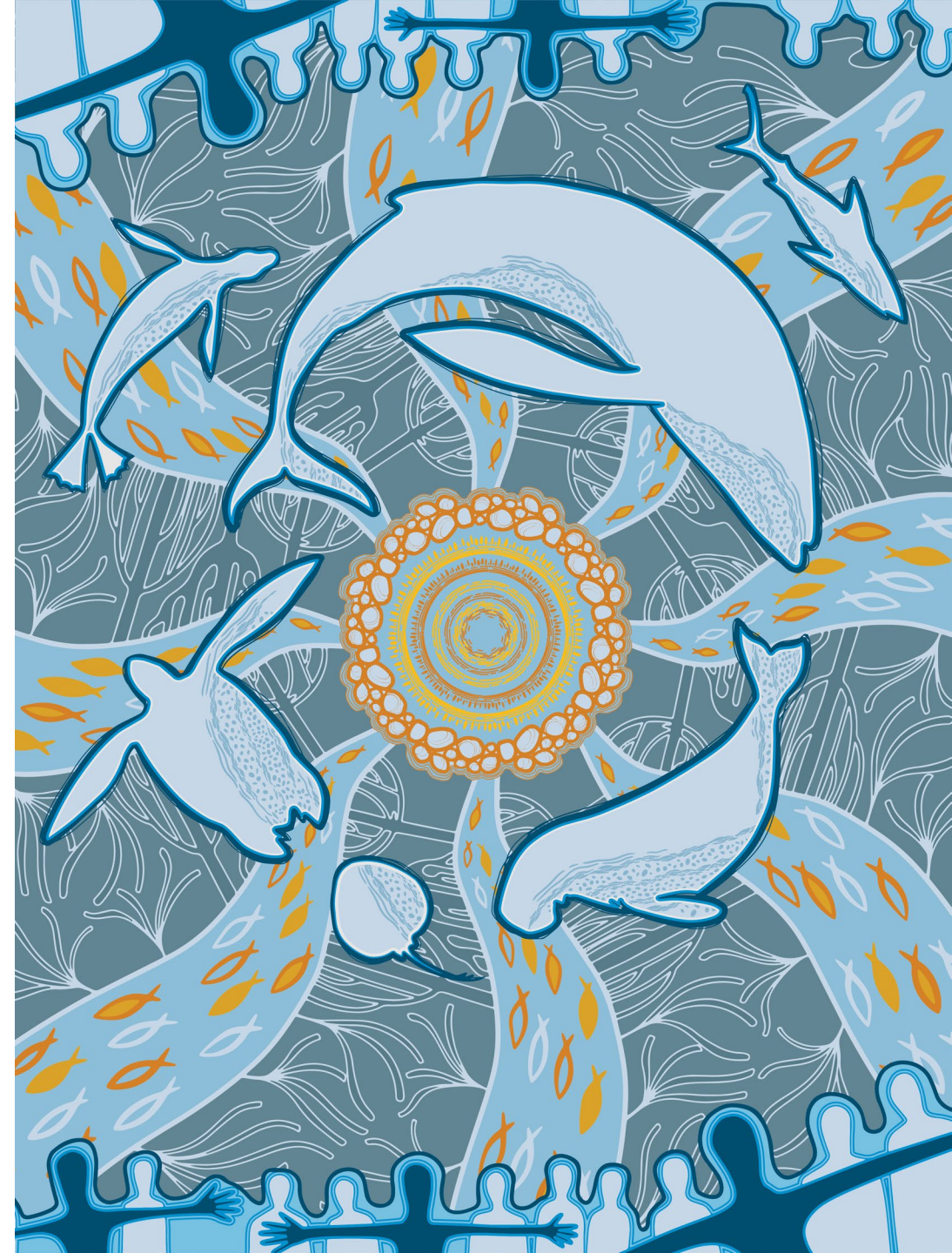
IMOS is working to enhance our connections and partnerships with First Nations.

IMOS worked with designer Tarquin Singleton, Yirrganydji, to create a piece of Sea Country artwork. The beautiful design exemplifies the role of IMOS in fostering collaboration between indigenous wisdom and modern science to provide an inclusive understanding of our marine environments.



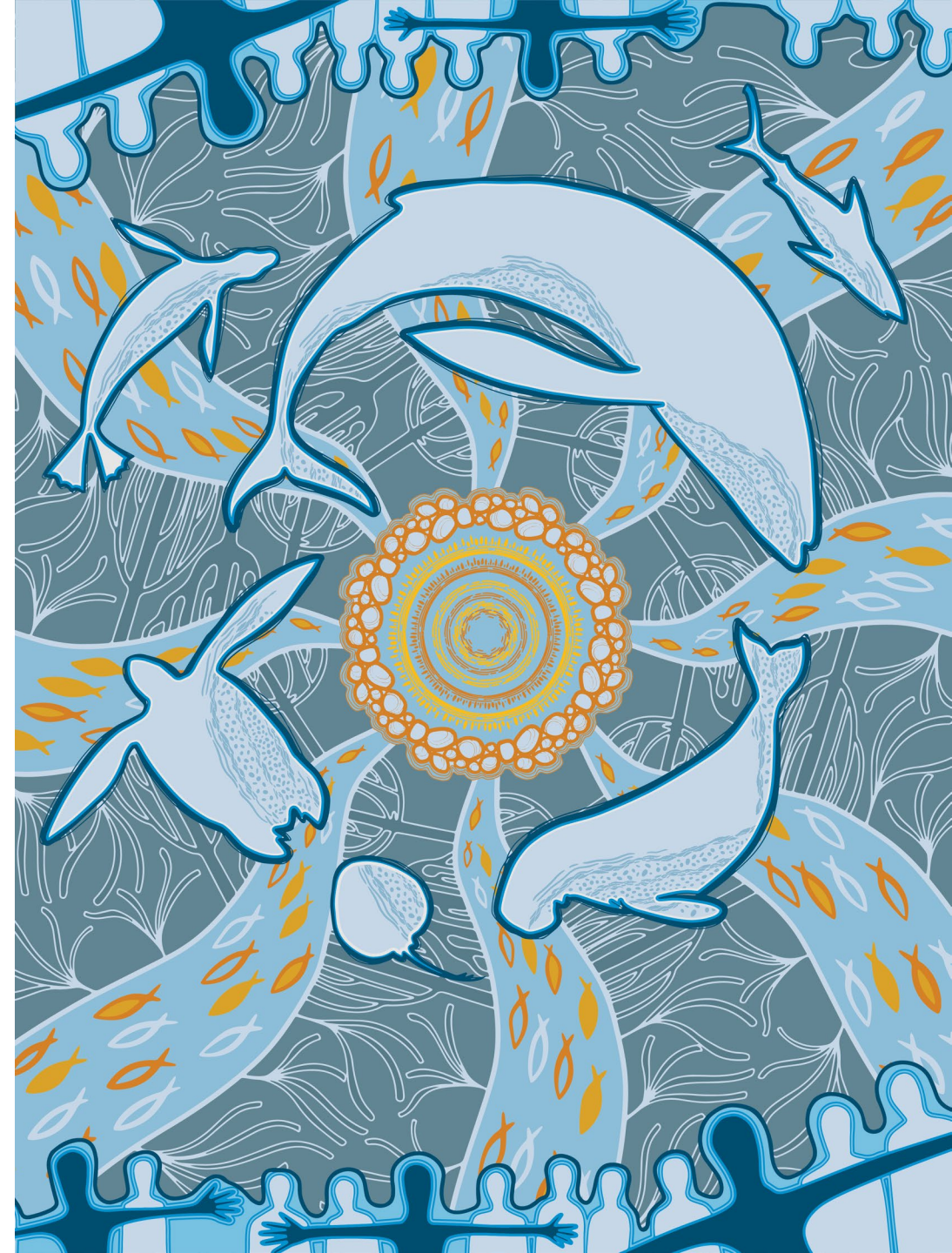
Current status

- The IMOS Office is working to increase First Nations participation in the program through our Sea Country Initiative.
- This is the beginning of our journey to develop co-designed observing to create benefit for all Australians.
- We have established a two-year agreement with the AIMS Indigenous Partnerships Program to support an IMOS Indigenous Coordinator.
- Meaningful partnerships and two-way communication with Indigenous communities are a vital aspect of our future program.



IMOS Indigenous Coordinator

- Hosted at and supported by the AIMS IPP.
- Supports culturally appropriate communication and engagement with Traditional Owners.
- Supports the development of cultural competency in the IMOS Office and boarder program.
- Helps facilitate two-way communication between IMOS participants and Traditional Owners.
- Helps identify appropriate Traditional Owner groups for IMOS infrastructure locations.
- Coordinates Free Prior Informed Consent processes for IMOS projects.
- Helps IMOS understand and implement CARE principles for Indigenous data governance.



IMOS Sea Country Initiative

Objective

Improve knowledge of marine systems/Sea Country through shared learning and understanding through collaborative and mutually beneficial partnerships.



IMOS Sea Country Initiative

Principles

- Relationships built on mutual respect and for mutual benefit.
- IMOS will include Indigenous-led activities aligned with scientific best practices, and ensuring cultural protocols are respected throughout all activities.
- Data management will protect sensitive Indigenous knowledge while sharing non-sensitive data through AODN and adhering to knowledge labels and data sharing principles (e.g. CARE).
- Activities will align with areas of core observing for IMOS to ensure adequate capacity to support the work and outcomes.
- Indigenous partners will maintain infrastructure with funded support to build local skills and capacity.
- Knowledge sharing with communities is a priority. Data products and data summaries will be developed to help ensure access and use by Indigenous partners.

Next Steps

- Embed the IMOS Indigenous Coordinator in our program and processes.
- Identify opportunities for Indigenous-led observing activities to establish a set of initial projects and develop appropriate processes for inclusion in IMOS.
- Support project leads with appropriate scientific expertise within the IMOS community and establishing clear agreements on data use and collection.
- Consider how IMOS engages and shares knowledge related to existing operations.
- Work to embed *two-eyed seeing* into existing protocols - incorporating Indigenous knowledge into current programs and sharing scientific findings in culturally appropriate ways.

Two-Eyed Seeing - learning to see from one eye with the strengths of Indigenous ways of knowing and from the other eye with the strengths of Western ways of knowing and to using both of these eyes together for the benefit of all.

Albert Marshall Mi'kmaq Elder
Bartlett, Marshall, & Marshall, 2012



Australia's Integrated Marine Observing System is enabled by the National Collaborative Research Infrastructure Strategy (NCRIS). It is operated by a consortium of institutions as an unincorporated joint venture, with the University of Tasmania as Lead Agent.

PRINCIPAL PARTICIPANTS



(Lead Agent)



SIMS is a partnership involving four universities

ASSOCIATE PARTICIPANTS



IMOS thanks the many other organisations who partner with IMOS, providing co-investment, funding and operational support, including investment from the Tasmanian and Western Australian Governments.

