

WA-IMOS

Perth Moorings

- NRS Rottnest Island
- Rottnest ADCP
- Two Rocks (5)
- Perth Canyon (3)

Esperance

- NRS Esperance
- Esperance ADCP

Ningaloo

- NRS Ningaloo (CTD cast only)

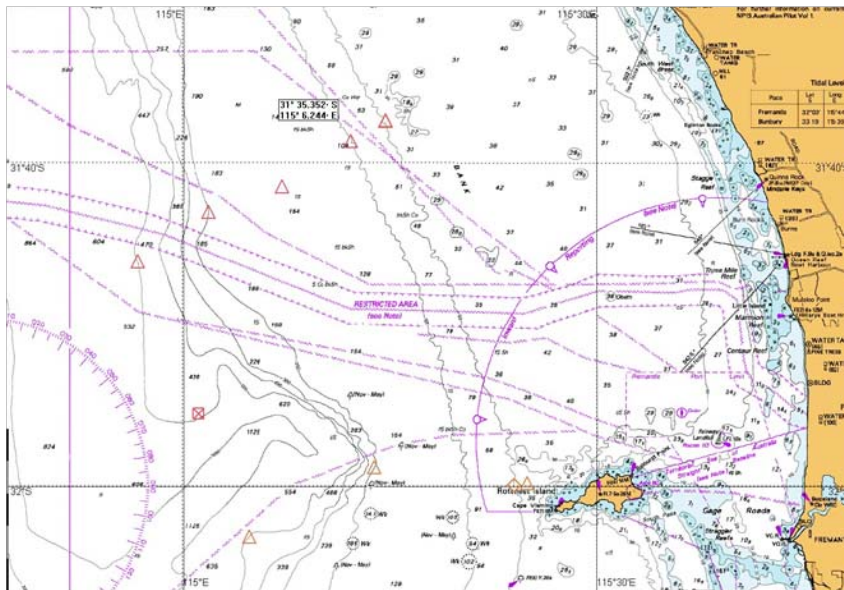
Team

- Ming Feng
- Ian Darby

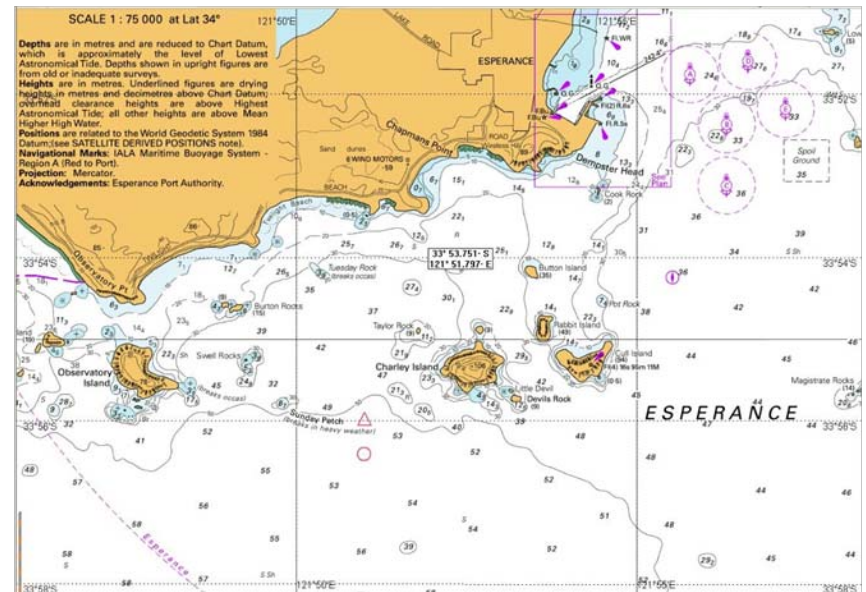
- Mark Snell
- Ryan Crossing
- Adam Thorn
- Liejun Zhong
- Dirk Slawinski

WA-IMOS: sites

Perth area

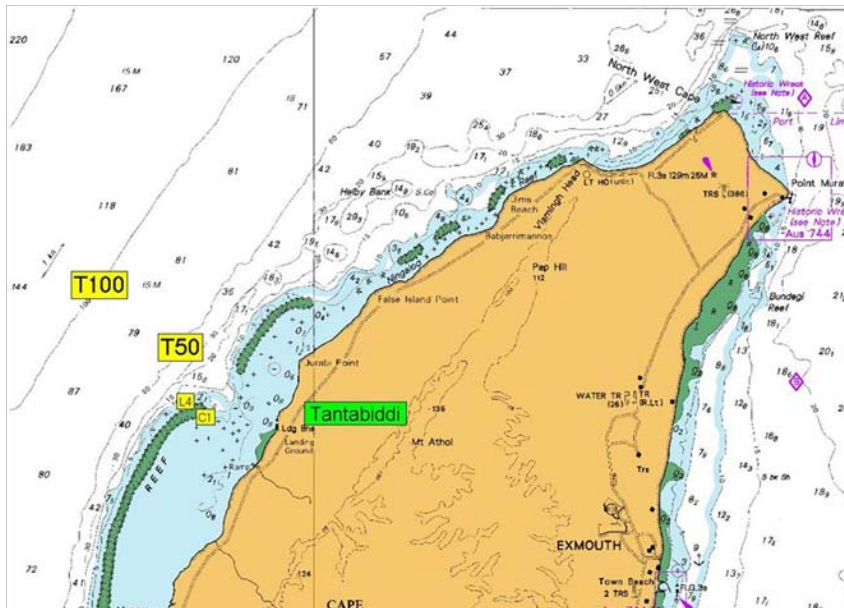


Esperance



WA-IMOS: sites

Ningaloo



Recap:

Perth Moorings

- NRS Rottneest Island
- Rottneest ADCP
- Two Rocks (5)
- Perth Canyon (3)

Esperance

- NRS Esperance
- Esperance ADCP

Ningaloo

- NRS Ningaloo (CTD cast only)

WA-IMOS: status

The latest FV00 files from *NRS Rottnest* and *NRS Esperance* have been uploaded to the data fabric.

The latest FV00 files from *Two Rocks* and *Perth Canyon* are ready to be uploaded when a WebDrive connection can be established. Since the recent maintenance work on the data fabric a connection has been unavailable.

The latest FV01 files for all deployments are ready for review by an oceanographer before uploading.

- **Total number of NC files: 780**

These are the latest versions using v2.1b of the toolbox. The files have been processed several times previously with different versions of toolbox, meta-data, preprocessing functions, QC functions and database formats.

Processed CNV files for all Seabird CTD casts are ready to be uploaded. Files have been processed according to Post-Processing Procedures v1.5. These files will be processed with the next stable version of the toolbox.

- **Total number of CNV files: 39**

WA-IMOS: processing

Toolbox:

- Version 2.1b

Preprocess function:

- DepthPP

QC functions:

- morelloImpossibleDateQC
- inWaterQC
- outWaterQC
- rangeQC
- morelloSpikeQC
- morelloStationarityQC
- morelloGradientQC

- teledyneSetQC (RDI)

Meta-Data:

- Global attributes are automatically filled in by the toolbox.

NOTE: Only temperature and salinity are processed by the Morello functions.

WA-IMOS: processing

Parameters

- Temperature
- Pressure
- Salinity
- Chlorophyll
- Dissolved oxygen
- Turbidity
- Fluorescence
- Water velocity

Instruments

- WQM
- SBE39
- SBE39b
- SBE19 plus
- RBR420
- RBR1050
- RBR XR620
- Nortek Aquadopp
- Nortek Continental
- RDI workhorse
- RDI Long Ranger

WA-IMOS: data streams

Rottnest

NRS Rottnest

- 11 deployments since November 2008.
- WQMs at 22m and 43m below MSL.
- SBEs at 27m and 33m below MSL.

Rottnest ADCP

- 4 deployments since July 2011.
- RDI ADCP at 44m.
- RBR 1050 at 45m

Rottnest CTD casts

- 25 casts to 50m since June 2010.

Esperance

NRS Esperance

- 13 deployments since November 2008.
- WQMs at 22m and 47m.
- SBEs at 30m and 37m.

Esperance ADCP

- 2 deployments since August 2011.
- RDI ADCP at 47m.
- RBR 1050 at 48m

Esperance CTD casts

- 13 casts to 50m since February 2009.

WA-IMOS: data streams

Perth Canyon

Perth Canyon (North)

- 1 deployment January to July 2010
- SBEs at 25, 50, 100, 150, 200, 250, 300, 350, 400, 450 and 495m.
- RBR1050 at 496m

Perth Canyon (South)

- 3 deployments since January 2010
- SBEs at 25, 50, 100, 150, 200, 250, 300, 350, 400, 450 and 495m.
- RBR1050 at 496m

Perth Canyon (200m)

- 5 deployments since January 2010
- SBEs at 25, 35, 50, 100, 125, 150 and 175m.
- RBR420 at 70m.
- Continental ADCP at 194m.
- RBR1050 at 196m

Ningaloo

Ningaloo CTD casts

- 6 casts to 50m since November 2010.

WA-IMOS: data streams

Two Rocks

Two Rocks 50m

- 6 deployments since July 2009
- SBEs at 25, 30, 35, 40 and 45m.
- RBR1050 at 46m

Two Rocks 100m

- 7 deployments since July 2009
- SBEs at 25, 30, 35, 40, 50, 70 and 90m.
- Aquadopp ADCP at 95m
- RBR1050 at 96m

Two Rocks 150m

- 6 deployments since July 2009
- SBEs at 25, 30, 40, 50, 70, 90 and 125m.
- RBR420 at 100m
- RDI ADCP at 145m
- RBR1050 at 146m

Two Rocks 200m

- 6 deployments since July 2009
- SBEs at 25, 35, 50, 100, 125, 150 and 175m.
- RBR420 at 70m
- Continental ADCP at 194m
- RBR1050 at 196m

Two Rocks 500m

- 2 deployments between July 2009 and Jul 2010
- SBEs at 25, 50, 100, 150, 200, 250, 300, 350, 450 and 495m.
- RDI ADCP at 496m
- RBR1050 at 501m

Two Rocks 500m

- 3 deployments since October 2010
- RDI ADCP at 496m
- RBR1050 at 501m

WA-IMOS: trials and tribulations

- Failing gear (out of the box!)
- Gear that is “not as described on box”
- Gear with “your mileage may vary” in fine print (on the box)
- Biofouling
- Trawlers
- “The Navy”
- Biofouling
- Biofouling
- Biofouling

WAIMOS: Website

WA-IMOS Mooring Facility

The Western Australian IMOS Mooring Facility (WAIMOS) is part of IMOS, a national initiative to monitor the seas and coastal areas around Australia. The local mooring node is responsible for the Rottneest National Reference Station (NRSROT), Perth Canyon (WACA) and Two Rocks (WATR) moorings in the Perth area as well as the Esperance (NRSESP) mooring and water sampling at Ningaloo (NRSNIN).

For Google map images see: [NRSROT](#) [NRSESP](#) [NRSNIN](#) [WATR](#) [WACA](#) [SEOTRAP](#)

The map displays the Western Australian coastline with various mooring locations marked by colored symbols and lines. The map includes latitude and longitude coordinates and depth contours.

WA has an internal IMOS website that is used as an operational database.

It is a central point for information such as:

- Deployment information
- Release codes
- Calibration due dates
- Instrument inventories
- Deployment data
- Deployment reports

This is an internal website that could be made accessible to all if there were a requirement to do so.

<http://www-cmar-per.vm.csiro.au/imos/waimos/>