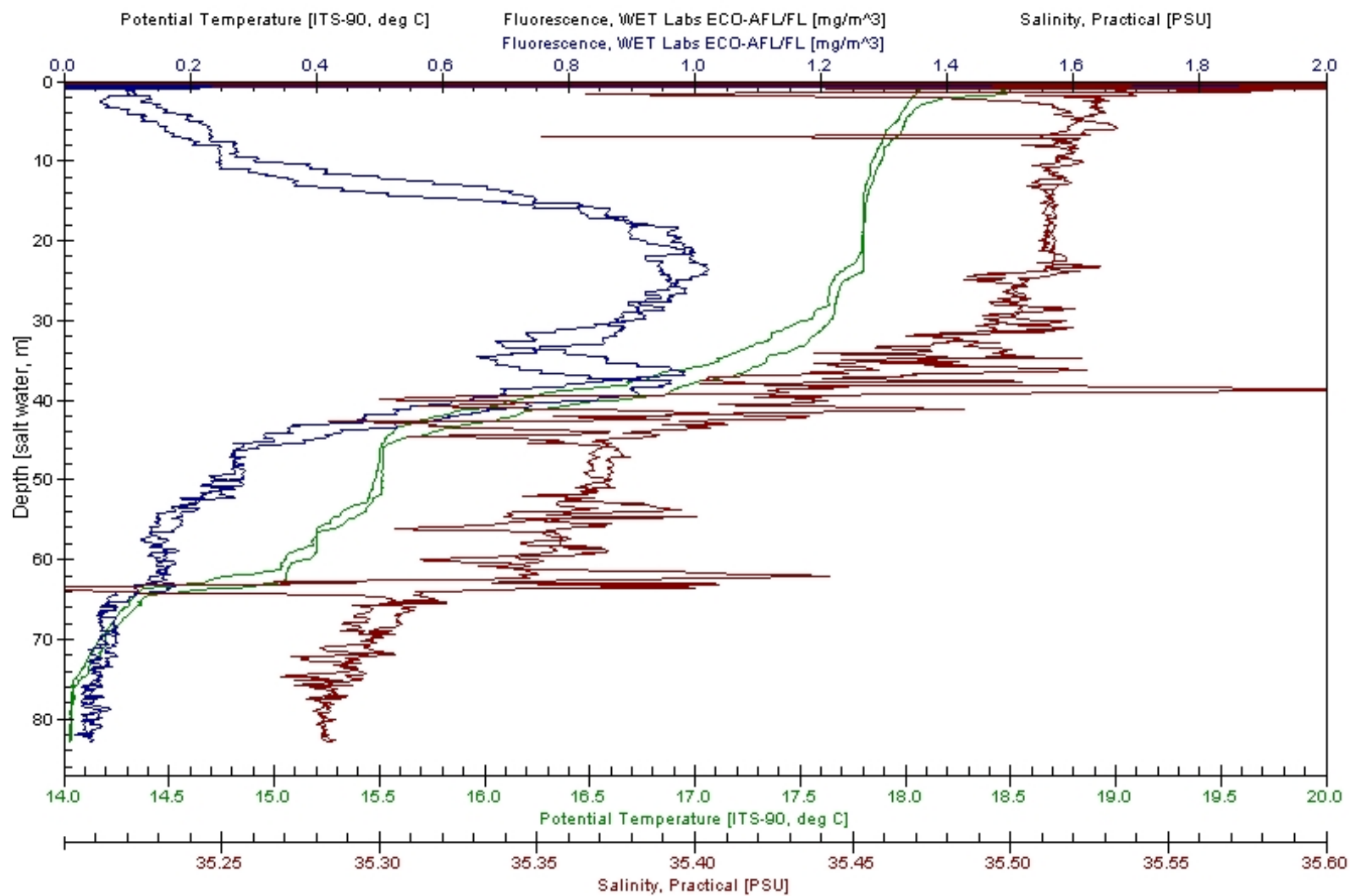
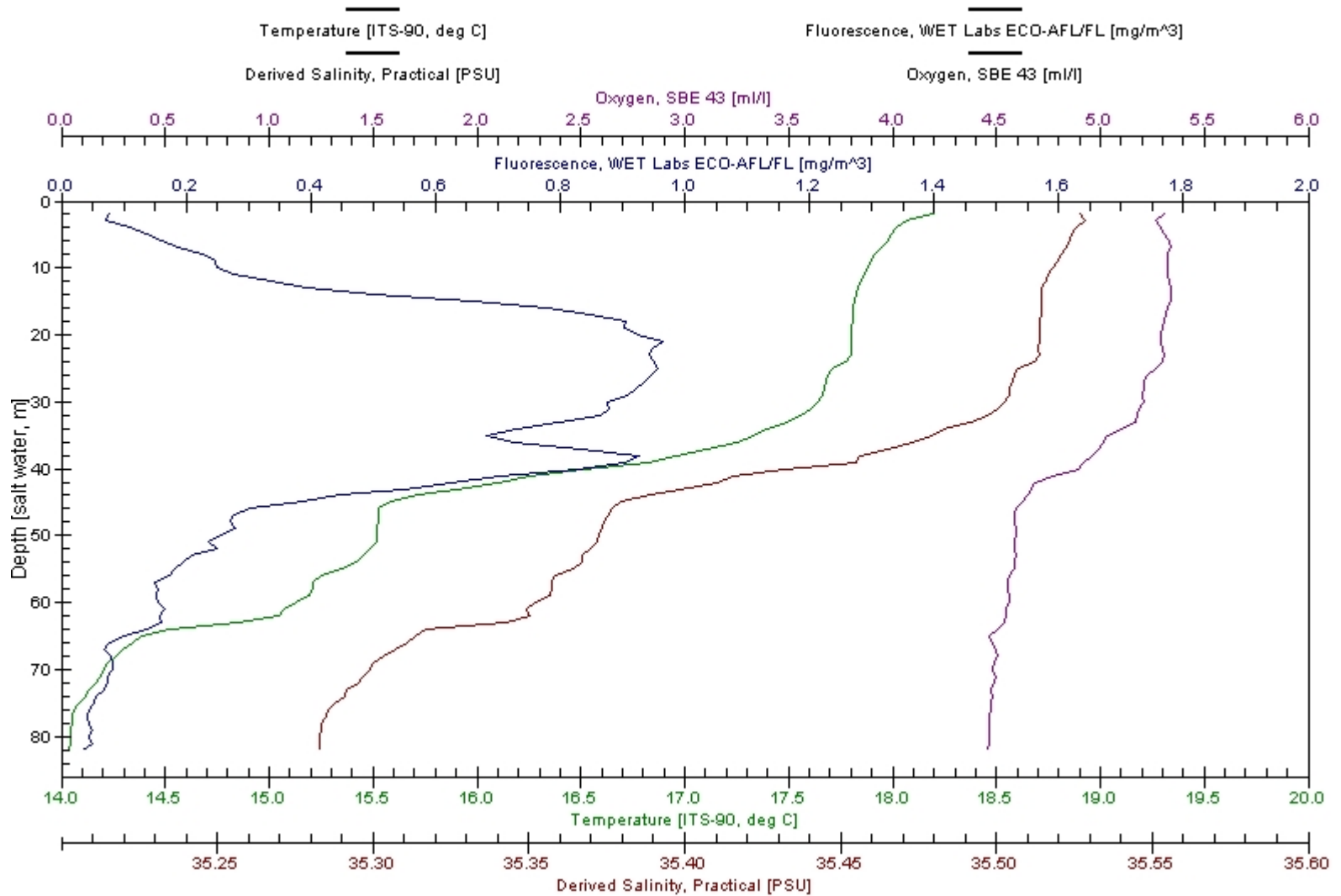


Spiking results largely from a mismatch of the conductivity and temperature sensors, especially when the profiling descent is non-uniform.....

MAI20120222.cnv



MAI20120222cfaldb.cnv



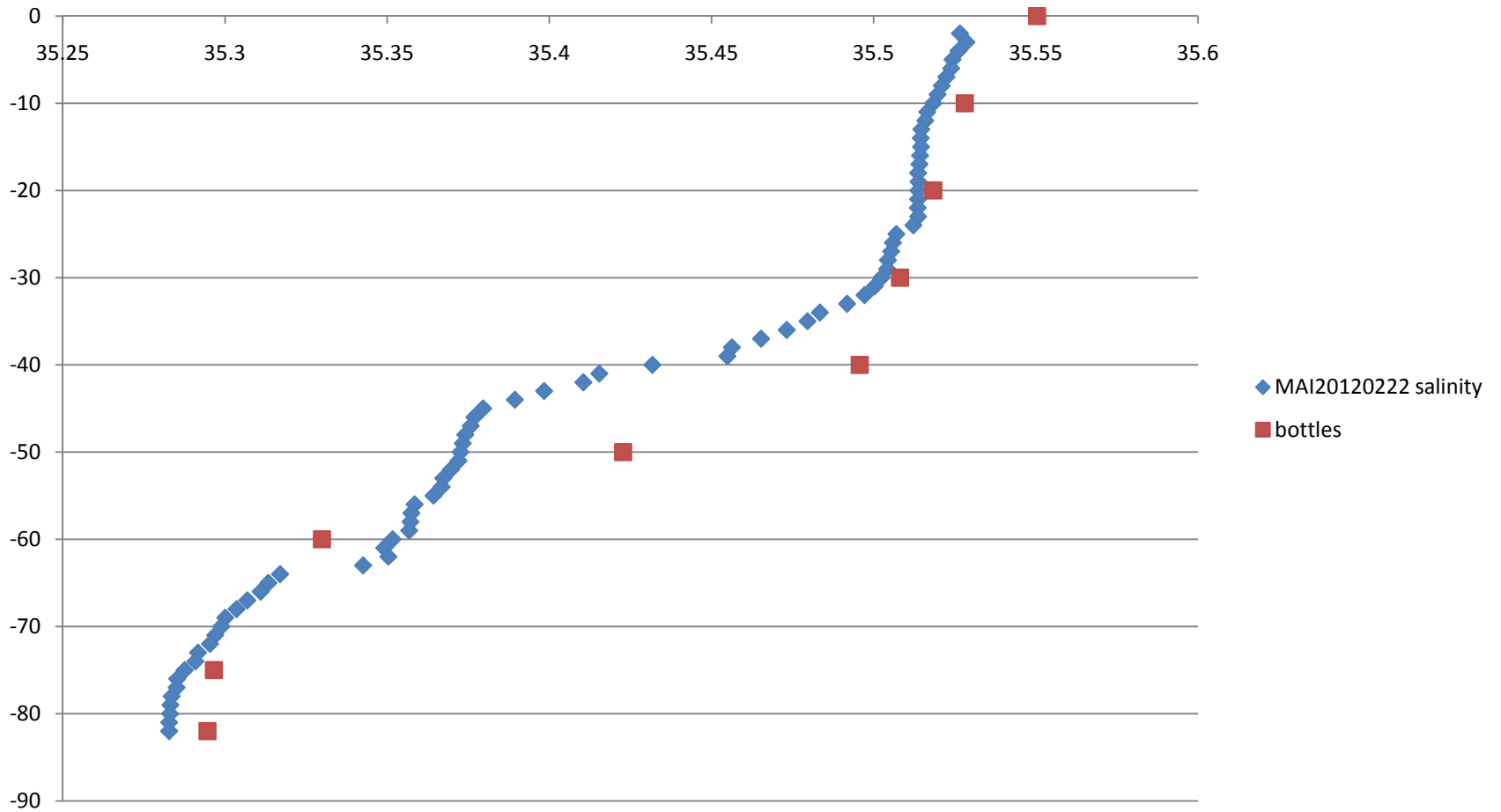
**National Reference Station Bio-Geochemical Sampling**  
**ANMN Standardised Profiling CTD Data Post-Processing Procedures v. 1.5**  
SIMS, CSIRO, SARDI and AIMS – 08 March 2012

Convert raw data to ASCII

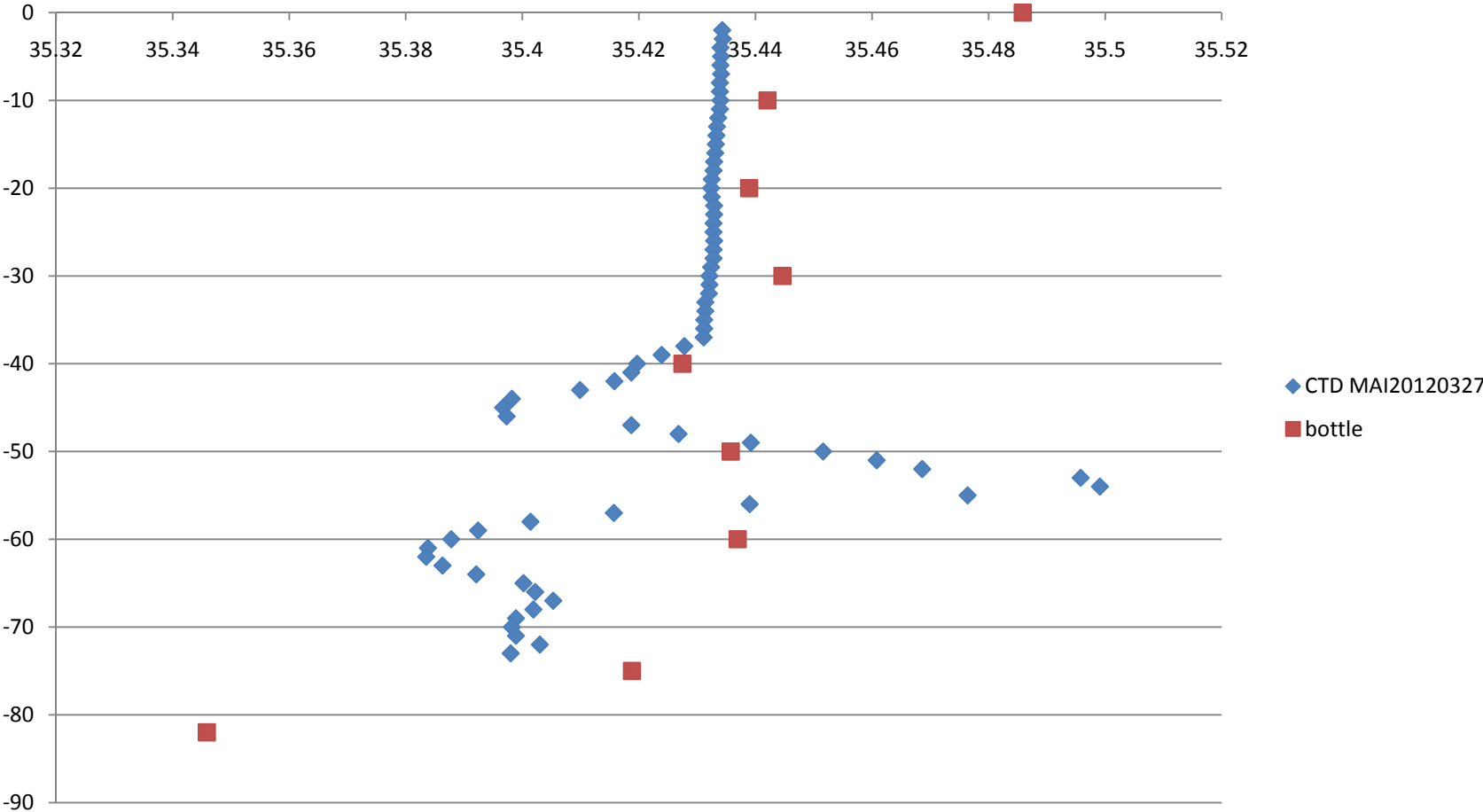
Processing steps

1. Data conversion
2. Low pass filter
3. Align parameters (temperature and conductivity)
4. Loop edit (removes surface soak)
5. Derive depth and salinity
6. Bin average to 1m intervals

# Bottle data v's smoothed CTD plot for MAI20120222



# Salinity bottle data v's smoothed CTD plot for MAI20120327





DO bottle data v's cast plot for MAI20120222

